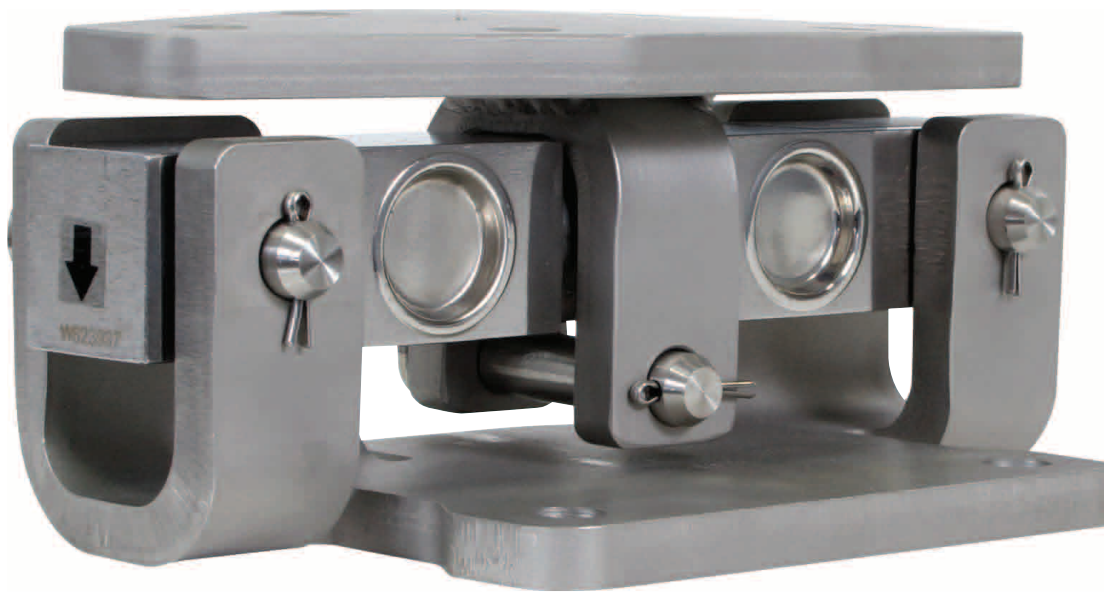


Heavy Duty Weigh Feet Kit





EASY TO REPLACE LOADCELLS

Self-servicing design allows for on-site maintenance

EASY INSTALLATION

Offset holes in bottom mounting plate for drilling concrete while handler is in place

SIMPLE TO RETROFIT

Designed to directly replace existing Heavy Duty Loadbars

HIGH ACCURACY LOADCELLS

Corner to corner accurate reads for superior weighing performance

HIGH CAPACITY DESIGN

To give significant overload protection

ROBUST

All critical parts stainless steel for long life

VERMIN PROOF

Rodent and crush protectors on loadcell and loadbar cables



Heavy Duty Weigh Feet Kit

The Gallagher Heavy Duty Weigh Feet Kit is a tough, stainless steel loadcell system designed for heavy duty weighing applications. This unique design offers an alternative weigh system option for cattle handlers and irregular shaped platforms.

The kit includes four weigh feet for placement in each corner ensuring accurate weight reads. Each weigh foot can be easily dismantled for loadcell replacement allowing loadcells to be replaced on site, preventing delays and stress during critical livestock handling sessions.

Heavy Duty Weigh Feet Kit G05420

Included:

- Four stainless steel weigh feet
- Extra foot supplied as a spare
- Prewired waterproof junction box

Key Features:

- Tough, stainless steel Weigh Feet for easy mounting under cattle handlers and custom platforms
- 5000kg/ 11,000lb weighing capacity
- Fast and easy loadcell replacement without major lifting
- High accuracy corner to corner performance for demanding weighing requirements
- Extra foot supplied in kit as a spare
- Top mounting plate hole placement identical to Heavy Duty Loadbars
- Compatible with Gallagher W610, W810 and TSi weigh scales (also SmartScale models with an adapter)

