

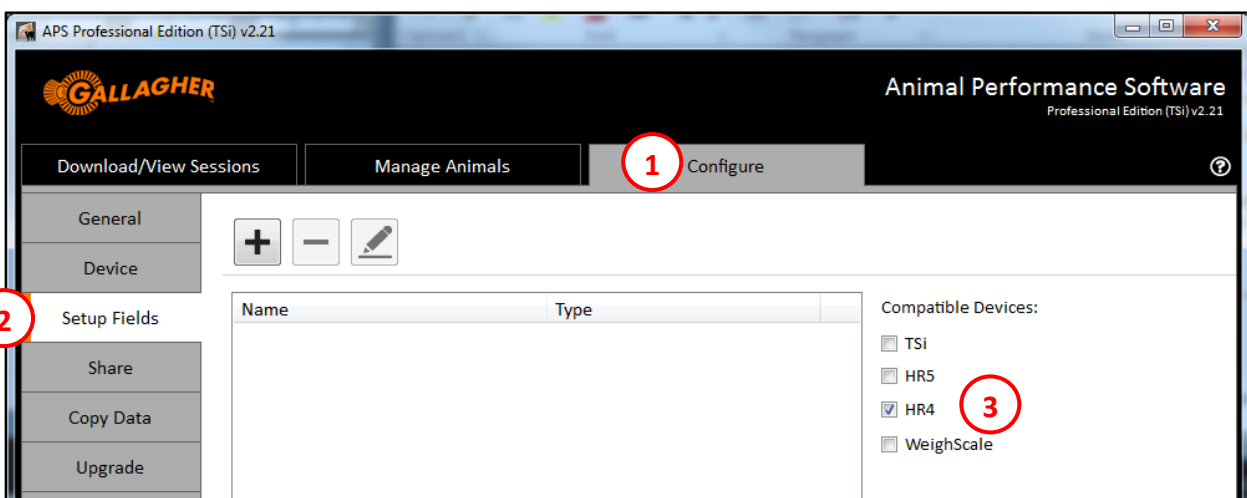
DATA RECORDING FOR FARMIQ

It is important that animal data is collected on the Gallagher hardware in the correct format, so that it can be easily imported to the FarmIQ system.

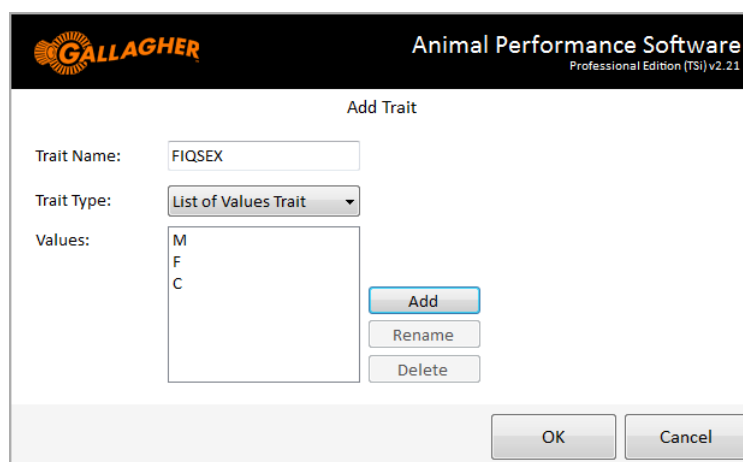
The FarmIQ system allows for the recording of several 'Life Data' fields. These fields must be given the correct names and have compatible values in order for them to be successfully imported to the FarmIQ FMS system. This guide is intended to walk the user through the configuration of 'Traits' for the HR4 and HR5 hand held EID tag reader and data collectors.

STEP 1 – CREATE THE NECESSARY TRAITS IN APS:

1. In APS, click on the *Configure* tab at the top of the screen.
2. Select the *Setup Fields* option from the menu on the left of this tab.
3. Select the *HR4* or *HR5* check box from the list of compatible devices on the right hand side of the screen.




4. Click on the *Add New* button
5. Select the field type to be *Trait* or *Life Data* (refer to the table below for more detail).
6. Enter a trait name - e.g. "**FIQSEX**".
7. Specify the trait type (e.g. *List of Values*), then click the *Add* button to configure the trait's values.
8. Enter values – e.g. "**M**" (male), "**F**" (female) and "**C**" (castrated).
9. Click the *OK* button.

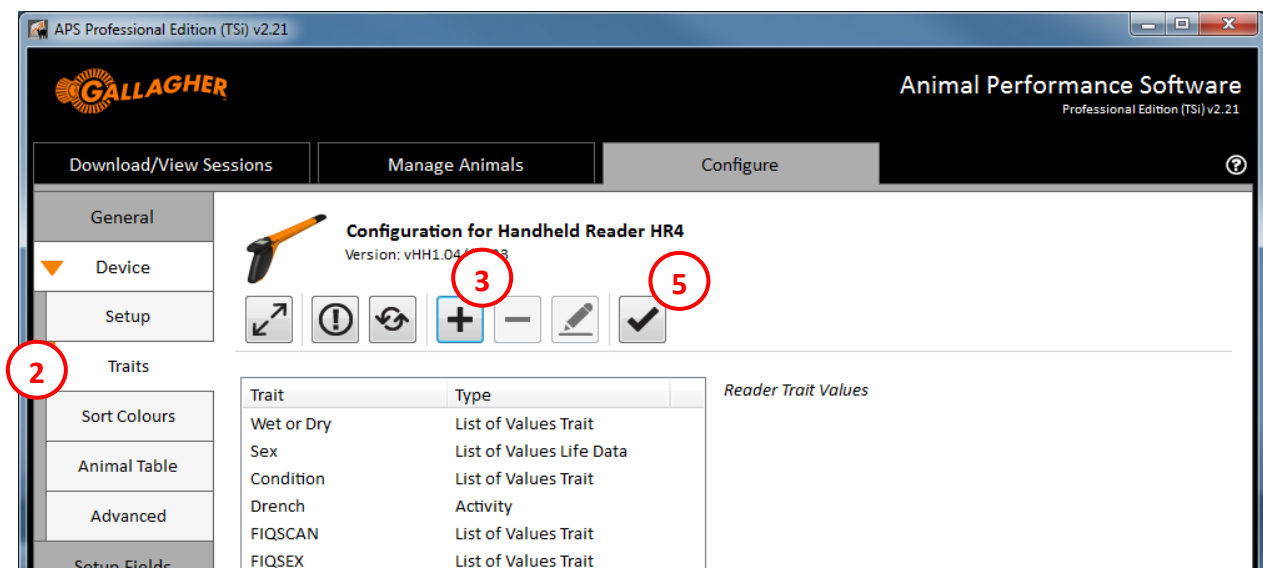




Repeat the above steps for any other FarmIQ traits that you wish to record with the reader. The table below provides a summary of the most commonly used traits:

TRAIT	RECOMMENDED APS NAME	FIELD TYPE	TRAIT TYPE	VALUES
Gender	FIQSEX	Life Data	List of values	M = male F = female C = castrated
Birth Rank	FIQRANK	Life Data	List of values Numeric (HR5 only)	1, 2, 3, 4
Breed	FIQBREED	Life Data	List of values	exact FarmIQ breed codes
Pregnancy scan	FIQSCAN	Trait	List of values Numeric (HR5 only)	0, 1, 2, 3, 4
Condition Score	FIQSCORE	Trait	List of values Numeric (HR5 only)	0.5 – 10.0
Date of birth	FIQDOB	Life Data	Date (HR5 only)	dd/mm/yyyy

STEP 2 – COPY THE TRAITS TO THE READER:


1. Physically connect the reader to your PC via the USB cable provided. Ensure that the reader is switched on and is on the *Main Menu* screen.
2. Once connected, click on the *Configure->Device->Traits* tab on the left hand menu of APS.
3. Click on the *Add Trait Table* button .

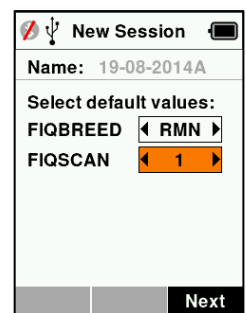
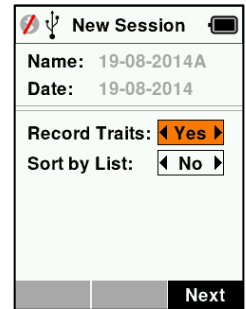


4. Select the FarmIQ traits that were created in STEP 1 above, and then click *OK*.
5. Click the *Apply* button  to send the traits to the reader.
6. Once the reader traits have been updated, the reader can be disconnected () and is ready for use.

STEP 3 – RECORD ANIMAL DATA ON THE READER:

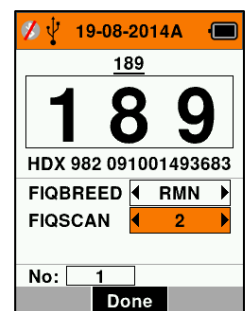
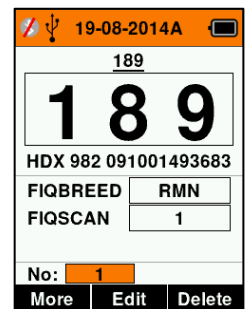
1. First create a new data recording session on the reader.

- a. From the main menu of the HR4 select the **Sessions** icon  and press the **OK** button.
- b. Using the up/down navigation keys, highlight **New Session** and press the **OK** button. A session name will automatically be generated for the new session.
- c. Use the left/right navigation keys to set the displayed **Session Options**. Set the **Record Traits** option to **Yes**.
- d. Click on the right hand soft key (**Next**).
- e. Use the up/down navigation keys to highlight the desired trait(s) and press the **OK** button to select up to three for use in the session.
 - Note that the order the traits are selected will determine the order that they are displayed when scanning animals.
- f. Click on the right hand soft key (**Next**).
- g. Using the left/right navigation keys, a default value for each trait can optionally be set. This value will automatically be assigned against each animal as its tag is read, but can still be changed if need be.
- h. Click on the right hand soft key (**Next**) to view the session set up summary.
- i. Click on the right hand soft key (**Done**) to start the session.




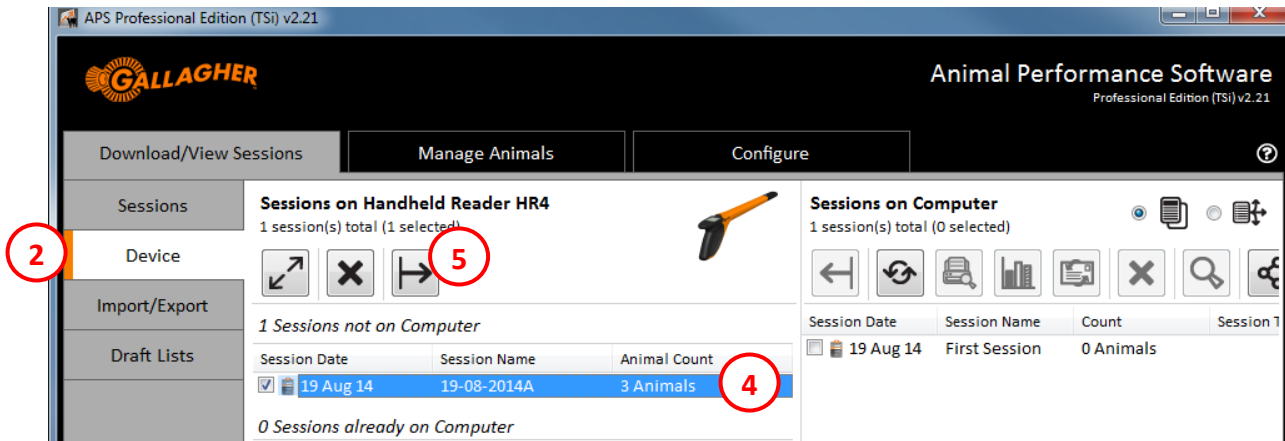
2. Read each animal and edit the recorded data to suit:

- a. Pull the trigger to commence reading.
- b. Once a tag has been successfully read, the lower portion of the screen will show the selected data items with the default values assigned against them.
 - Note that if an animal already has a value recorded for a *Life Data* item, this will be displayed instead of the session default. *Life Data* fields will not be overwritten by the session default.
- c. If a value is to be changed, press the middle soft key (**Edit**).
- d. Use the up/down navigation keys to highlight the data item that is to be changed.
- e. Use the left/right navigation keys to assign a new value to the data item.
- f. Press the middle soft key (**Done**) to complete the edit, or simply pull the trigger to read the next animal.
- g. Repeat steps 'a' to 'f' above for each animal.



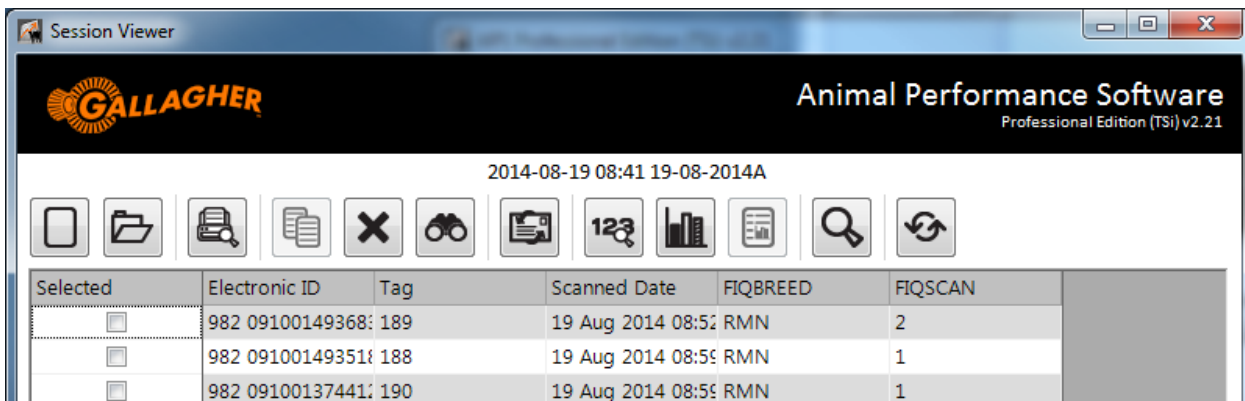
STEP 4 – COPY THE SESSION DATA ONTO YOUR PC:

1. Connect the reader to your PC via the serial cables provided.
2. Open APS and navigate to the *Download/View Sessions* -> *Device* tab.
3. Click on the image of the reader to establish a connection. A list of all sessions stored on the device will appear in the left hand pane.
4. Select the session from the right hand list (this has been automatically named on the reader).
5. Click on the *Copy Sessions to APS* button  .



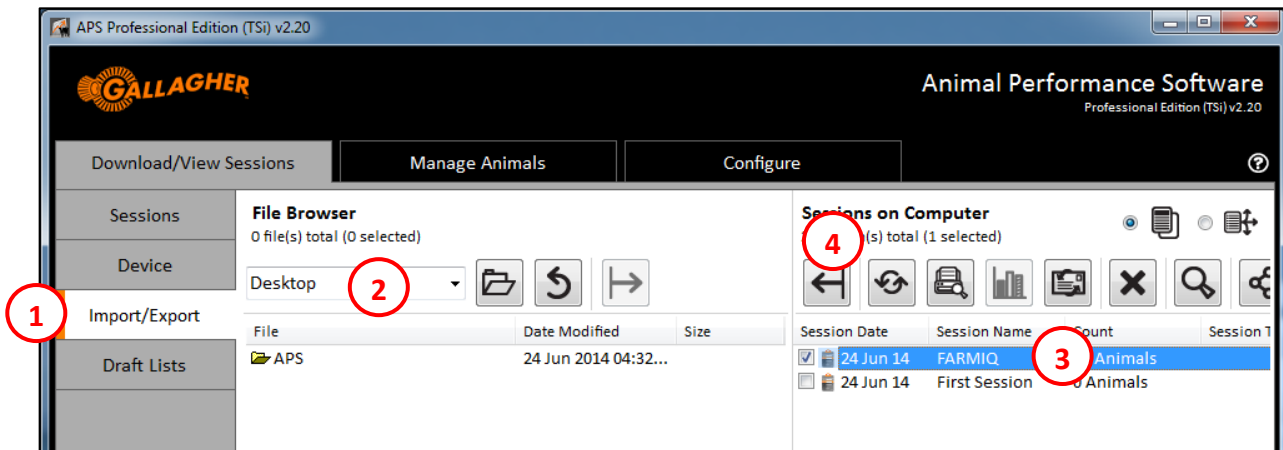
NOTE:

Once the session file has been copied to APS, the data can be analysed in depth. Refer to the APS manual for more detail.

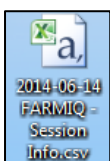
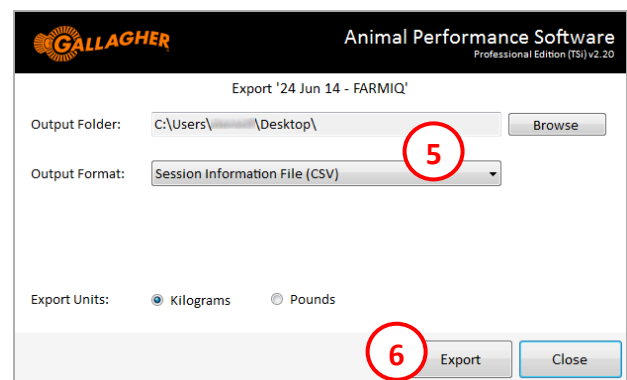


STEP 5 – EXPORT A FARMIQ FILE:

1. Navigate to the *Download/View Sessions* -> *Import/Export* tab.
2. Select where the exported file is to be saved to via the drop down box at the top of the left hand pane.
3. Select the session file from the right hand pane.
4. Click on the *Export* button



5. The export options will show. Confirm that the *Output Folder* is correct and that the *Output Format* is set to *Session Information File (CSV)*.
6. Click on the *Export* button to begin the export process.
7. Once the export is complete, click on the *Close* button.



NOTE:

The resultant file will be saved in a format that is ready to upload into the FarmIQ system. For more detail on how to perform a file upload, please refer to the FarmIQ documentation.