



Weighing and EID Systems

Weigh Scales
EID Tag Readers
Weighing Platforms and Sheep Auto Drafter
Stock Prods

NEW
WIRELESS
LOADBARS



Contents

Systems

Why Weigh? **Page 6**

Weighing and EID systems **Page 7**

Products

Weighing & Data Recorders **Page 8**

Touch Screen Weigh Scales **Page 10**

Entry-level Weigh Scales **Page 16**

W-1 Weigh Scale **Page 17**

W-0 Weigh Scale **Page 18**

Loadbars **Page 20**

Wireless Loadbars **Page 22**

Loadbars & Accessories **Page 24**

Platforms and Handlers **Page 26**

Sheep Auto Drafter **Page 28**

EID Readers **Page 30**

HR4 and HR5 Hand Held EID Tag Reader **Page 32**

Hands Free, Fixed EID Tag Readers **Page 34**

Animal Performance web & mobile app **Page 36**

Sheep Auto Drafter **Page 28**

Stock Prods **Page 40**

Service and Support **Page 41**





The power to farm.

With over 80 years of experience in the farming industry and a reputation for ground breaking innovations in animal management, Gallagher lead the way in animal management solutions. Offering a full range of electric fencing, wireless water monitoring and livestock weighing, data collection and EID systems.

Brilliantly simple farm management

Gallagher pioneered New Zealand's first electric fencing system in 1938 and is today an internationally renowned leader in the innovation of animal management products. Our customers are the focus of all our decisions and actions, driving us to continue to make farm life easier and more profitable.



**Farming may be the
'good life' but it's
certainly not easy..**

Being a farmer himself, Bill Gallagher Snr understood the challenges of farming and wanted to make it simpler. Inventing NZ's first electric fence in the 30's, he did just that. More than 80 years on, we're in it for the long haul - still getting stuck in alongside farmers to make the hard job of farming easier. The Gallagher story really does start with a story - and one that illuminates the approach we still take today in designing brilliant solutions for our customers.

It's in our DNA to discover, design and deliver customer inspired solutions to redefine what's possible for customers around the world.



We're good listeners

Decades of field expertise and listening to farmers from around the world means Gallagher understands their unique needs and are committed to creating solutions that open up new opportunities for better farming.



**MADE IN NEW ZEALAND,
FOR NEW ZEALAND.**



You can do it the hard way...or the Gallagher way

Brilliantly simple solutions that make farm life easier and more profitable – it's what Gallagher does best.



Farm fit guaranteed

All Gallagher products have to overcome the challenges of everyday farming before they even leave the factory. This Energizer is undergoing one of a number of rigorous environmental stress tests to check it can handle the toughest conditions.

Why weigh?

You can't manage what you don't measure.

Why weigh your livestock?

Weighing your livestock is a powerful performance measurement tool for farmers. Monitoring livestock weight gives farmers insight into animal growth, health and performance, allowing them to make more informed management decisions using data that is accurate and easily accessible.

The benefits of weighing your livestock:

Monitor the growth of your animals

Monitor animal health

Measure feed conversion to maximise yield by monitoring weight gain over time

Reach target animal weights prior to mating for better reproduction rates

Determine if weaning weights have been achieved

Select animals by weight for sale and slaughter

Evaluate animal breeding performance for genetic selection



Why weigh with EID?

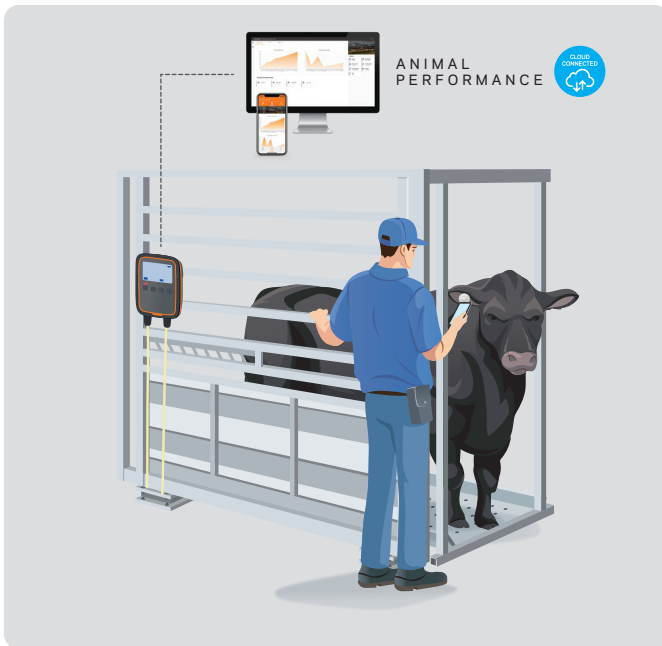
Recording EID tags when weighing livestock makes your data even more powerful - building a total picture of every individual animals performance history on your farm.

Combining weights with animal ID numbers enables you to accurately record and monitor individual animal health, growth, and performance over its lifetime.

Recording animal EID tags also makes NAIT compliance easy, giving each animal a unique ID number to register with NAIT using the Gallagher Animal Performance web and mobile app.

Weigh Only System

An easy to use yet powerful system that accurately measures animal weight so that farmers can track performance.



EID Only System

The quick and easy way to comply with NAIT traceability legislation, and to collect animal data anywhere on farm.



Weighing and EID System

The best option for farmers looking to manage their business more profitably. An advanced system that works together to automate animal management and handling tasks, saving time and money.



8 Weigh Scales and Data Recorders

TW-1 Weigh Scale
Pictured right



Weighing your livestock is a powerful performance measurement tool for farmers.

Monitoring livestock weight gives farmers insight into animal growth, health and performance, allowing them to make more informed management decisions using data that is accurate and easily accessible.

Weigh Scales

Features	NEW						
	TWR-5	TW-3	TWR-1	TW-1	W-1	Animal Performance Plus app via Wireless Loadbars	W-0
Weighing and data function	Weight + Weight gain + Traits	Weight + Weight gain + Traits	Weight + Weight gain	Weight + Weight gain	Weight + Weight gain	*Weight only	Weight only
Data function	✓	✓	✓	✓	✓	✓	✓
Internal rechargeable battery	✓	✓	✓	✓	✓		✓
Max number of weigh records	1,000,000+	1,000,000+	1,000,000+	1,000,000+	*1,000,000+	*1,000,000+	*1,000,000+
EID compatible	✓	✓	✓	✓	✓	+	+
Built-in integrated EID reader	✓		✓				
Assign VID (visual tag) against an animal	✓	✓	✓	✓	✓	✓	*
Calculates average daily gain	✓	✓	✓	✓	✓	✓	
Individual animal notes and alerts	✓	✓	✓	✓	✓	✓	
Review full animal history on the scale, in the yards	✓	✓	✓	✓	✓		
Number of traits recorded per session	9	3					
Custom defined traits (e.g Condition score, genetics etc)	✓	✓					
Weight based calculations (dose or kill weight)	✓	✓					
Record and manage treatments and withholding periods	✓	✓					
Drafting							
Liveweight drafting	✓	✓	✓	✓	✓	✓	*
Draft by weight gain	✓	✓	✓	✓	✓	*	
Draft from imported draft list by EID tag	✓	✓	✓	✓	✓	*	
On screen drafting statistics	✓	✓	✓	✓	✓	✓	*
Large coloured drafting groups	✓	✓	✓	✓	✓	✓	*
Maximum number of draft groups	9	9	9	9	9	9	9
Connectivity							
Automatic Loadbar recognition & calibration	✓	✓	✓	✓	✓	✓	
Bluetooth connectivity	✓	✓	✓	✓	✓	✓	✓
WiFi connectivity	✓	✓	✓	✓	✓	✓	
Animal Performance web and mobile app (see page 26)							
Compatible with Animal Performance ecosystem	✓	✓	✓	✓	✓	✓	*
Bluetooth connectivity to Animal Performance mobile app						✓	*
Upload data straight to Animal Performance via WiFi	✓	✓	✓	✓	✓	✓	*

*Features available when using the Gallagher Animal Performance mobile app
+ Animal Performance Plus subscription required

Touch Screen Weigh Scales

The Gallagher Touch Weigh Scale range makes weighing and data management easier than ever before. Manage your animal weights and data all on an easy to use, fully intuitive touch screen.

Outdoor readable touch screen

Data analysis and graphs

Built in EID Tag reader



Utilising market leading touch screen technology the full colour LCD display is outdoor readable, designed to be easily read in full sunlight.

Record and analyse animal performance data with on screen data records and performance graphs.

All-in-one weigh scale, data collector and EID tag reader, TWR Weigh Scales combine two pieces of weighing hardware into one weigh scale.

TWR Weigh Scales only.

MODEL	WEIGHING AND DATA FUNCTION	TOUCH SCREEN	NUMBER OF TRAITS RECORDED PER SESSION	BUILT IN EID READER	CONNECTION TO ANIMAL PERFORMANCE
TWR-5	Weight + Weight gain + Traits	✓	9	✓	✓
TW-3	Weight + Weight gain + Traits	✓	3	-	✓
TWR-1	Weight + Weight gain	✓	-	✓	✓
TW-1	Weight + Weight gain	✓	-	-	✓

Simplifying the Weigh Scale experience

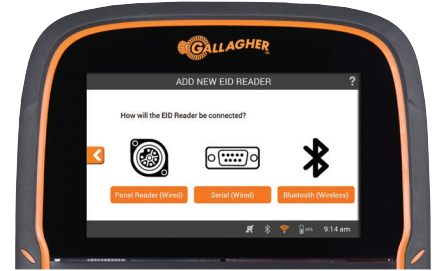
The Gallagher Touch Weigh Scale range makes weighing and data management easier than ever before. Manage your animal weights and data all on an easy to use, fully intuitive touch screen.



Simple to use, easy to read



On board help, 24/7



Simple connectivity options

Animal performance data at your fingertips

The Gallagher Touch Screen Weigh Scales make recording and analysing weight and weight gains easy. View individual weight gain graphs, as well as weight distribution plots for all animals within a weighing session.



Draft by weight, weight gain or eid list (and traits on the TWR-5 & TW-3)



View animal weight gain charts



View weight distribution of a session

The complete package, ready to go

Just plug into your existing load bars and you have everything you need to start weighing:

- Tough and convenient Gallagher carry case
- Mounting bracket
- Micro-fibre screen cloth
- Battery charging cable
- Mains charging cable
- USB cable for data transfer to PC



12 Weight + Weight gain + Traits

TWR-5

G02606

MAGIC, WITHOUT THE WAND. THE WEIGH SCALE THAT READS TAGS.

An all-in-one weigh scale, data collector and EID tag reader, TWR Weigh Scales combine two pieces of weighing hardware into one, enabling the task of tag reading and weighing to be done easily and efficiently.



TWR Weigh Scales include all the features from page 11, plus:

Benefits

Animal notes and note alerts

Record notes against animals on the spot for later review.

Comprehensive recording of life data and traits

For farmers wanting to record and review more information than simply weight on their animals. Record up to 9 traits per session.

Record treatments on the spot

Animals can be weighed and administered the correct dose rate, all recorded on the weigh scale at the time of treatment.

Draft up to 9 groups

Draft by weight, weight gain, predetermined EID list or by recorded life data and traits.

Integrated EID reader*

Built in EID reader means the farmer can plug the weigh scale straight in to an EID antenna to record weights and easily scan EID tags. This eliminates the need to purchase a separate EID reader.

Flexible mounting options

Easy to use sitting flat, or mounted to a vertical surface. The adjustable mounting bracket allows you to easily tailor the viewing angle for optimum visibility.



No loadbar cables needed - compatible with Wireless Loadbars

Bluetooth connectivity to Wireless Loadbars removes the hassle and risk of cables being chewed by rodents, stood on by stock or damage to traditional scale connectors



*Antenna Panel sold separately - see page 33.



TW-3

G02603

WEIGHT GAIN & ANIMAL PERFORMANCE AT THE TOUCH OF A FINGER

Simple to operate weigh scale and data collectors make weighing and data management easier than ever before - all on an easy to use, fully intuitive touch screen.



TW Weigh Scales include all the features from page 11, plus:

Benefits

Animal notes and note alerts

Record notes against animals on the spot for later review.

Comprehensive recording of life data and traits

For farmers wanting to record and review more information than simply weight on their animals. Record up to 3 traits per session.

Record treatments on the spot

Animals can be weighed and administered the correct dose rate, all recorded on the weigh scale at the time of treatment.

Draft up to 9 groups

Draft by weight, weight gain, predetermined EID list or by recorded life data and traits.

Flexible mounting options

Easy to use sitting flat, or mounted to a vertical surface. The adjustable mounting bracket allows you to easily tailor the viewing angle for optimum visibility.

No loadbar cables needed - compatible with Wireless Loadbars

Bluetooth connectivity to Wireless Loadbars removes the hassle and risk of cables being chewed by rodents, stood on by stock or damage to traditional scale connectors



The complete package, ready to go.

Just plug into your existing load bars and you have everything you need to start weighing:

- Mounting bracket
- Tough and convenient Gallagher carry case
- Micro-fibre screen cloth
- Battery charging cable
- Mains charging cable
- USB cable for data transfer to PC



14 Weight + Weight gain

TWR-1 G02602

MAGIC, WITHOUT THE WAND. THE WEIGH SCALE THAT READS TAGS.

An all-in-one weigh scale, data collector and EID tag reader, TWR Weigh Scales combine two pieces of weighing hardware into one, enabling the task of tag reading and weighing to be done easily and efficiently.



TWR and TW Weigh Scales include all the features from page 11, plus:

Benefits

Animal notes and note alerts

Record notes against animals on the spot for later review.

Draft up to 9 groups

Draft by weight, weight gain or predetermined EID list

Integrated EID reader* (TWR-1 only)

Built in EID reader means the farmer can plug the weigh scale straight in to an EID antenna to record weights and easily scan EID tags. This eliminates the need to purchase a separate EID reader.

Flexible mounting options

Easy to use sitting flat, or mounted to a vertical surface. The adjustable mounting bracket allows you to easily tailor the viewing angle for optimum visibility.

No loadbar cables needed - compatible with Wireless Loadbars

Bluetooth connectivity to Wireless Loadbars removes the hassle and risk of cables being chewed by rodents, stood on by stock or damage to traditional scale connectors



*Antenna Panel sold separately - see page 33.



TW-1

G02602

WEIGHT GAIN & ANIMAL PERFORMANCE AT THE TOUCH OF A FINGER

Simple to operate weigh scale and data collectors make weighing and data management easier than ever before - all on an easy to use, fully intuitive touch screen.



TWR and TW Weigh Scales include all the features from page 11, plus:

Benefits

Animal notes and note alerts

Record notes against animals on the spot for later review.

Draft up to 9 groups

Draft by weight, weight gain or predetermined EID list

Flexible mounting options

Easy to use sitting flat, or mounted to a vertical surface. The adjustable mounting bracket allows you to easily tailor the viewing angle for optimum visibility.

No loadbar cables needed - compatible with Wireless Loadbars

Bluetooth connectivity to Wireless Loadbars removes the hassle and risk of cables being chewed by rodents, stood on by stock or damage to traditional scale connectors



The complete package, ready to go.

Just plug into your existing load bars and you have everything you need to start weighing:

- Mounting bracket
- Tough and convenient Gallagher carry case
- Micro-fibre screen cloth
- Battery charging cable
- Mains charging cable
- USB cable for data transfer to PC



Entry-level Weigh Scales

The perfect way to start measuring your livestock performance.

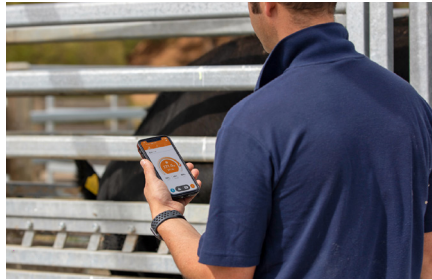
Monitor livestock weights to gain insights into how your stock are performing. With simple installation, easy to use design and connectivity to the Gallagher Animal Performance mobile app, these livestock weighing solutions are the ideal solution to start weighing.

Easy collection of weights



Intuitive, easy to install weighing systems that makes it easy to start monitoring animal performance.

Mobile app connected



Bluetooth connectivity sends weights and performance straight to the Gallagher Animal Performance mobile app.

Sync your data with Animal Performance



Synchronise your animal data with the Animal Performance web and mobile cloud system to have the latest performance up-to-date on all your devices for further analysis.

MODEL	WEIGHING AND DATA FUNCTION	TOUCH SCREEN	NUMBER OF TRAITS RECORDED PER SESSION	BUILT IN EID READER	CONNECTION TO ANIMAL PERFORMANCE
W-1	Weight + Weight gain	-	-	-	✓*
W-0	Weight only	-	-	-	✓*
Weigh Scale App via Wireless Loadbars	Weight only	✓*	-	*	✓*

* Bluetooth to phone

W-1 Weigh Scale

Entry-level, EID compatible weigh scale with WiFi connectivity to sync your animal data to your Animal Performance web and mobile app.



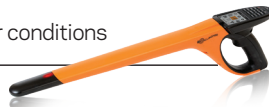
Benefits

Record individual animal weight and weight gains

Record weights and animal IDs to manage and improve individual animal health and performance

Large, easy to read colour screen

Bright 5" LCD screen is easily read in all-weather conditions



Connects to wireless EID readers

Built-in Bluetooth and WiFi connectivity enables simple connections with EID reader and software applications

No loadbar cables needed - compatible with Wireless Loadbars

Bluetooth connectivity to Wireless Loadbars removes the hassle and risk of cables being chewed by rodents, stood on by stock or damage to traditional scale connectors

On the spot digital notes and alerts

Record notes against individual animals for later review and receive alerts when the animal is next weighed

View animal performance in the yards

Individual weight gain graphs and weight distribution plots for all animals in a weighing session

Long lasting, rechargeable lithium battery

Internal rechargeable lithium battery operates for up to 15 hours

Simple to use interface

Large intuitive keypad makes weighing and screen navigation straightforward



Sync your animal data without leaving the yards.

WiFi connectivity allows you to sync your animal data straight to Animal Performance web and mobile app, ensuring all your livestock information is up-to-date and available on your mobile app, P.C and other weighing hardware



W-0 Weigh Scale

Entry level weigh scale to monitor livestock weights. Providing insight into animal health, growth and performance.



Benefits

Easily measure livestock performance

Monitor weights to manage and improve animal health and growth

Simple to use interface

Large intuitive buttons make weighing straightforward

Tough, farm ready exterior

Built to withstand the harshest of farming environments

Long lasting, rechargeable power

Internal rechargeable battery operates for up to 30 hours

Large, easy to read screen

Backlit LED screen is easily read in all-weather conditions

Full control of your weigh scale

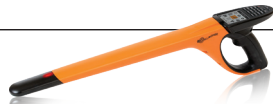
Change between automatic and manual weight lock modes directly on your scale

Suitable for permanent or temporary installation

Includes mounting bracket and hardware for permanent installation or easily used sitting flat or handheld

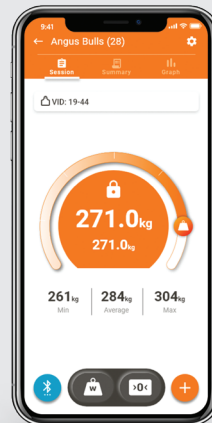
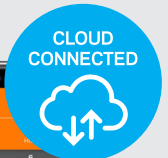
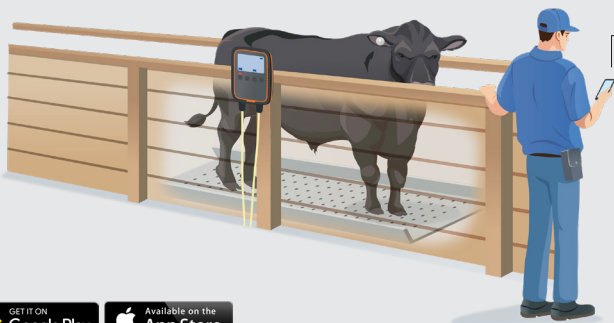
Record individual weight and weight gains on your phone with animal IDs*

Connect your HR4 or HR5 EID reader straight to the Animal Performance mobile app to scan EID tags and track individual animal performance for instant weight and weight gain records. *Animal Performance Plus subscription required



Record livestock weights and sessions on your phone.

Bluetooth connectivity sends weights straight to the Gallagher Animal Performance App or 3rd party software applications



Animal Performance mobile app and Wireless Loadbars

Your weigh scale is in your pocket. Use your phone to easily collect weights and monitor animal health and performance.

Animal Performance Plus subscription fee applies.



Discover the added value of **Animal Performance Plus** with powerful tools to take your operation to the next level.

See page 37 for more details.

Benefits

Record livestock weights and sessions on your phone

Bluetooth connectivity records weights from Wireless Loadbars straight to the Animal Performance mobile app – removing the need for a weigh scale

Record individual weight and weight gains on your phone with animal IDs

Connect your Handheld EID reader straight to the Animal Performance mobile app to scan EID tags and linking them to weights to track individual animal performance

Plus, all the data analysis tools from Animal Performance web and mobile app:

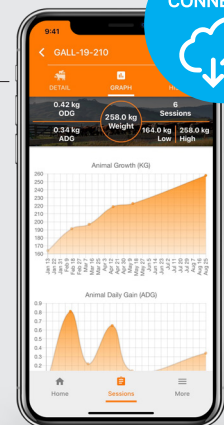
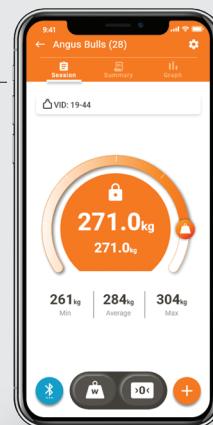
Take control of your data with a fully connected solution that allows you to track animal performance, make better decisions and grow your profit.

- View your animal data from anywhere, at any time, on multiple devices
- Synchronise your animal data without leaving the yards
- Meaningful insights and simple analysis tools
- Built-in NAIT compliance



Record livestock weights and sessions on your phone.

Bluetooth connectivity sends weights straight to the Gallagher Animal Performance mobile app





2500kg Wireless Loadbars

Packed with features for outstanding performance.

A galvanised chassis to ensure long life, protected loadbar cables to minimise damage in the yard and easy maintenance and superior reliability with no moving parts.

Loadbars

Wireless Loadbars

Eliminate the most common failure point of traditional Loadbars - the cables. Wireless Loadbars remove the risk of cables being chewed by rodents, damaged by stock, water damage or damage to the weigh scale connection ports.

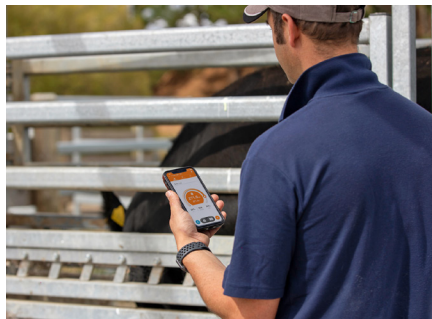
Wireless Weigh Scale system



Connect wirelessly to a TW or TWR Weigh Scale.

Bluetooth connectivity sends weights straight to a Gallagher TW or TWR Weigh Scale, removing the hassle and frustration of loadbar cables.

Weigh scale in your pocket



Use your phone to collect livestock weights.

Bluetooth connectivity sends weights straight to the Gallagher Animal Performance mobile app, removing the need for Weigh Scale.

*Animal Performance Plus subscription fee applies. See page 37 for more detail.

Long lasting lithium battery

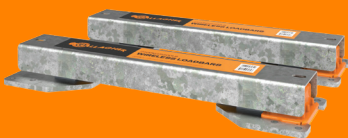


Up to 10 years of battery life*. When battery is running low, the Animal Performance mobile app or your TW/TWR Weigh Scale will notify you to order a replacement lithium battery pack.

*Based on 4 hours of weighing per week.



Wireless Loadbar range:



2500kg Wireless Loadbars
G06030 - 600mm



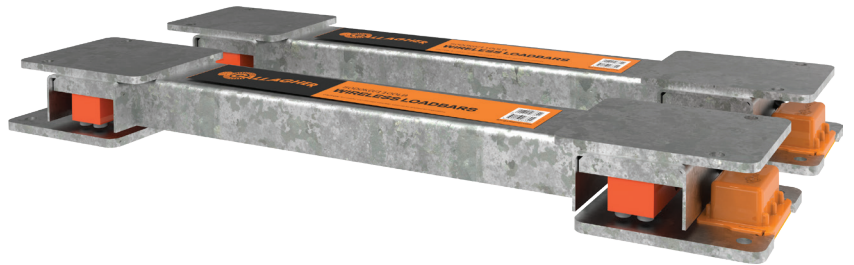
2500kg Wireless Loadbars
G06130 - 1000mm



5000kg Wireless Loadbars
G06330 - 1000mm

Wireless Loadbars

Send weights straight to your Gallagher TW Weigh Scale or Animal Performance mobile app with Bluetooth connectivity.



Benefits

No cables needed

Wireless connectivity removes the risk of cables being chewed by rodents, stood on by stock or damaging traditional scale connectors

Transportable and easy to install

Wireless design makes Loadbars easier to transport and move to different weighing locations

Tough, farm ready exterior

Waterproof, galvanised steel chassis built to withstand the harshest of farming environments

Accurate livestock weights, time after time

Loadcells contain no moving parts, ensuring no wear for years of accurate weighing

Versatile Loadbars designed for use under weigh platforms and crushes

Universal design that fits under most livestock platforms and suitable for cattle crushes and sheep handlers

The wireless weighing solutions

Bluetooth connectivity

Bluetooth connectivity sends weights straight to a Gallagher TW or TWR Weigh Scale. Make sure your Weigh Scale is updated with the latest software update.



Weigh Scale app connectivity

Bluetooth connectivity sends weights straight to the Gallagher Animal Performance mobile app. Animal Performance Plus subscription fee applies. See page 37 for more detail.



Cabled Loadbars

Gallagher Loadbars are packed with features for outstanding performance
 A galvanised chassis to ensure long life, protected cables to minimise damage in the yard and easy maintenance with no moving parts.

Suitable Loadbars for all weighing set ups



Range of Gallagher Loadbars are designed for to suit all sorts of livestock wieghing set ups, from sheep handlers, lightweight platforms or heavy cattle crushes.

Waterproof weigh scale connectors



High quality, water proof connectors offer a reliable and secure connection between the Loadbar and Weigh Scale

We've
Beefed

up our **loadbar** range

NEW AND
 IMPROVED
 LOADBAR
 CAPACITY
 RATINGS





1500kg Loadbars

580mm length G06500

Fit for purpose, entry-level loadbar suitable for platform weighing.

Benefits

Entry-level, fit for purpose loadbar

580mm/23" length suitable for up to 1500 kg/3330 lb weights

Versatile loadbar for platform weighing

Lightweight design that fits under most livestock platforms

Long-life design

Galvanized steel chassis construction ready for farming environments



UPGRADED
2,000KG TO
2,500KG

2500kg Loadbars

600mm length G06000 / 1000mm length G06100

Our most versatile loadbar, fits most sized platforms with slotted top-mounting holes.

Benefits

Designed for easier installation

Bottom feet mounting holes extend beyond the top covers for ease of bolting down

Universal platform design

Slotted top mounting holes consciously designed to fit most sizes of platforms

Tough, spring protected loadbar cables

6 metre long polyurethane loadbar cables covered with tough stainless steel protection springs

Reliable, long lasting design

Fully waterproof loadbar design with no moving parts or rubber mounts that can often breakdown and cause incorrect weights



UPGRADED
3,500KG TO
5,000KG

5000kg Heavy Duty Loadbars

1000mm length - G06300

Designed to withstand large shock loads, ideal for permanent installation under a cattle crush.

Benefits

High capacity loadcells

Heavy Duty loadcells able to withstand large shock loads and record heavy stock weights

Ideal for permanent installation under large crushes

Heavy steel chassis construction to withstand the harshest environments

Designed for easier installation

Bottom feet mounting holes extend beyond the top covers for ease of bolting down

Tough, spring protected loadbar cables

6 metre long polyurethane loadbar cables covered with tough stainless steel protection springs

Reliable, long lasting design

Fully waterproof loadbar design with no moving parts or rubber mounts that can often breakdown and cause incorrect weights

Accessories

6 metre Loadbar Extension Cables



- 2000kg Loadbar (G05000)
- 3500/4500kg Loadbar (G05100)
- 6 metre long, tough polyurethane loadbar cables
- Fitted with high quality, moisture proof connectors.

Suspension Load Cells



- 250kg (G05500)
- 500kg (G05501)
- Spring wire protected cable
- Fitted with high quality, moisture proof connectors.


Weigh feet

Heavy Duty Weigh Feet Kit

5000kg weighing capacity
G05420



- Tough, stainless steel weigh feet for easy mounting under cattle handlers and custom platforms
- Fast and easy loadcell replacement without major lifting
- High accuracy corner to corner performance for demanding weighing requirements
- Extra loadcell supplied in kit as a spare
- 2 year warranty.

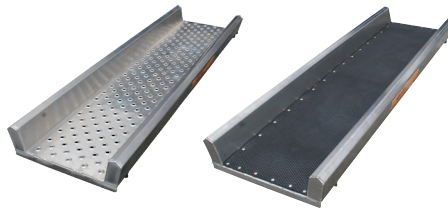
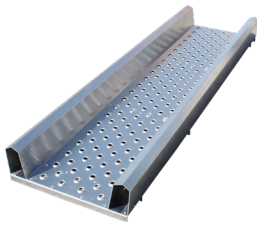
A photograph showing a sheep standing on a weighing platform inside a metal handler structure. The platform is orange and has a black sensor mounted on top. The handler is made of dark metal bars. The background shows a blurred outdoor setting with trees and a building.

Sheep Auto Drafter

Corrosion resistant aluminium weighing platforms that combine strength, portability and longevity to provide a safe and reliable platform for livestock weighing.

Gallagher weighing platforms are the ideal solution for static livestock weighing. Available in multiple dimensions for all animals including custom designs, made specifically to suit your yards.

Platforms and Handlers



Standard Cattle Weighing Platform

G05804: 2200mm x 605mm
G05805: 2200mm x 605mm - rubber lined

A standard platform ideal weighing younger cattle.

Designed to fit 600mm long load bars (cabled or wireless). The standard model removes the added bracing and safety of the Cattle Weighing Platform making it an ideal solution to start weighing younger cattle.

Cattle Weighing Platform

G05800: 2400mm X 705mm
G05820: 2400mm X 705mm - rubber lined

The recommended solution for weighing cattle. Made of 100% aluminium construction, this platform is high strength and corrosion resistant with the ability to weigh up to 1500kg loads.

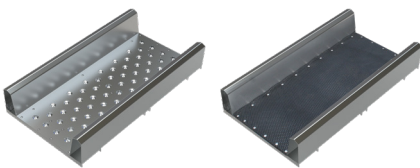
Designed to fit 600mm long load bars (cabled or wireless) with the platform floor consisting of punched holes, making it easier to clean and offering more traction underfoot for cattle.

Two Piece Cattle Weighing Platform

G05850: 2200mm X 650mm

A versatile, two-piece aluminium platform that locks together in the centre to form a strong, yet portable weighing platform that is designed for weighing cattle of all ages.

The Two Piece Cattle Weighing Platform is easily broken down into two even pieces, making transportation around different weighing locations more manageable for a singular person. This two-piece platform can also be used as a calf weighing platform, with one half of the platform able to accommodate 2 load bars.



Calf Weighing Platform

G05802: 1100mm X 605mm
G05803: 1100mm X 605mm - rubber lined

A shortened weighing platform designed specifically for weighing calves. Made of 100% aluminium, this high-strength, corrosion resistant platform offers a reliable, fit-for-purpose calf weighing platform.

Horse Weighing Platform

G05810: 2400mm X 1000mm

An equine specific weighing platform that prioritises horse comfort and safety with a smooth rubber lined floor that provides quiet operation with increased traction under foot.

Rubber lined options are also available for quiet operation, increased traction and soft, smoother footing for your animals.

Gallagher weighing platforms are the ideal solution for static livestock weighing, also available in custom dimensions, made to suit your yard set up.

Farmquip Animal Handlers

Gallagher recommend Farmquip animal handling products. Farmquip supply a full range of animal handling equipment for sheep, cattle, deer and horses.

Visit www.farmquip.co to find out what equipment would best suit your animal handling requirements.



Sheep Auto Drafter

Fully automated system that is smoother, quieter and easier to set up and operate than any other sheep drafting product on the market. Includes a weigh crate, integrated load cells and EID antenna panels, control module with remote and three way draft module. Just add a Weigh Scale and it's ready to go.

Fully automated weighing and drafting



Includes a weigh crate, integrated load cells and EID antenna panels, control module with remote and three way draft module. Just add a Weigh Scale and it's ready to go.

Service package plans



Buy the Gallagher Sheep Auto Drafter with confidence and peace of mind.



Remote control operation
Unit can be controlled by one operator.



High visibility control panel
Includes emergency stop button, auto/manual status & fault lamp.

Benefits

Three way drafter gate design to encourage sheep movement
Modular design makes for easy attachment. Add additional units to expand to 5-way drafting.

Built in EID panel readers
Compatible with TWR Touch Screen Weigh Scales to read sheep EID tags as they enter the drafter

Compatible with Gallagher and other branded weigh scales
(Sold separately).

Quality, durable materials and construction
Composite material withstands repeated sheep impact

Save time with faster flow
Short travel split gates for rapid capture and release at entry and exit.

Superior safety for farmer and animal
No trapping points, metal bars or sharp edges



Key benefits of annual servicing

- **Trained experts** – You'll be looked after by Gallagher Support Staff and Service Engineers trained to the highest level as part of Gallagher's training standards. They have access to resources, diagnostic equipment, and genuine parts to ensure you extract long-term value out of your investment
- **Help whenever you need it** – If you need support for your Gallagher Sheep Auto Drafter, you can call us on 0800 731 500. Our Customer Service Team based in New Zealand are ready to answer any questions you may have.
- **Flexibility** – We offer two service packages to suit your needs: one year or three years.
- **Guaranteed top performance** – A regular service ensures you get the best performance from your Sheep Auto Drafter: speed, stock flow, stock selection, software updates, operator and animal safety, accurate weighing, and more!

Service packages and inclusions

One year	Three years
\$650.00 <small>plus GST</small>	\$1,800.00 <small>plus GST</small>
	SAVE \$150.00

- On-site service of up to 4 hours by a Gallagher Service Engineer
- Service Engineer travel (up 2 hours from nearest city airport)
- Consumables (including but not limited to: bushes, lubricants, cleaning fluids, cable ties, screws, hoses, joints, etc.)

Questions? We're here to help. Call us on 0800 731 500.

*Terms, conditions, warranty limitations and exclusions apply. Costs may change without notice. Please visit our website www.gallagher.co.nz or phone our Customer Service Team at 0800 731 500 for the latest pricing. See also www.am.gallagher.com/nz/warranty for warranty information.

HR4
Pictured right

An EID tag reader is a critical part of an EID system. The reader captures the unique tag number of individual animals as they are weighed, treated, or identified in a yard or race.

EID Readers



Hand Held Portable EID Readers

Hand Held EID tag readers are lightweight, hardwearing and easy to use - perfect for on the go use at different sites – animal data can be read, recorded, and collected anywhere on the farm.

Large easy to read LCD screen



2.8" backlit colour display with high resolution large graphics is easy to read indoors and out.

Link EID tags with animal weights



Bluetooth connectivity to your weigh scale links EID tags with animal weight, allowing you to monitor animal performance data over it's lifetime

MODEL	WEIGHING AND DATA FUNCTION	COLOUR LCD SCREEN	NUMBER OF TRAITS RECORDED PER SESSION	ENTER VID NUMBERS	CONNECTION TO ANIMAL PERFORMANCE
HR5	Editable data recording and EID scanning	✓	9	✓	✓
HR4	Pre-defined data recording and EID scanning	✓	3*	-	✓

*pre-defined prior to session

INCLUDES
Wi-Fi



HR5 v2 Hand Held EID Tag Reader and Data Collector

G03303

With its large colour screen and alpha numeric keypad, the HR5 Hand Held EID Tag Reader is the most powerful portable data collection and editing platform available providing flexibility right there in the yard.



HR4 v2 Hand Held EID Tag Reader and Data Collector

G03302

The perfect tool for portable EID data collection. Easy recording of pre-defined animal data against EID tag numbers.



Benefits

Scan and record electronic ID tags

Scan RFID tags, linking them a weight on a weigh scale or recording them on a the EID reading device for data collection or compliance traceability

Send EID numbers straight to your weigh scale or Animal Performance mobile app*

Bluetooth connectivity to your weigh scale or mobile phone links EID tags with animal weight, allowing you to monitor animal performance data over it's lifetime. *Subscription fee applies for mobile connection

Send and receive draft lists and session data from your Animal Performance account

WiFi connectivity to Animal Performance web & mobile app allows data to be synchronised to your account without needing to visit the the office

Large easy to read screen

2.8" backlit colour display with high resolution large graphics - easy to read indoors and out

Market leading ergonomic design

Long reach snout with rubber hand grip and hand guard for added safety

LED light, vibration and beeper

Know when you have successfully scanned a tag with LED light, hand vibration and beeper keeping you informed

Pair with other devices

Easily search and connect via Bluetooth to other devices

Fast and continuous EID reading mode

Read multiple tags in quick succession with one trigger click - no need to repeatedly click the trigger between reads



Convenient heavy duty carry case

Both models come complete with pastic carry case, that includes user manual, charging and PC connection cables.



Compatible with Animal Performance web and mobile app

HR4 & HR5 activities



Easily read visual and EID tag numbers

Large display clearly shows visual ID and EID tag numbers to confirm the correct animal's information is being collected.



Collect data, not just EID numbers

Choose multiple traits to record against each animal such as breed, sex, condition score and pregnancy status.



Sort on the go

Sort group name is highlighted on screen for easy reference with optional group colours.



View animal history

View past traits, activities and life data recorded against an animal.

HR5 only activities



Easily read visual and EID tag numbers

Large display clearly shows visual ID and EID tag numbers to confirm the correct animal's information is being collected.



Collect data, not just EID numbers

Choose multiple traits to record against each animal such as breed, sex, condition score and pregnancy status.



Sort on the go

Sort group name is highlighted on screen for easy reference with optional group colours.



Add and edit session names

Customise session names, making it easy to identify sessions once uploaded to your Animal Performance account.

HR5 only activities



Record visual ID's

Visual ID's can be added on the go, and used to identify and record information against an animal eg. replacing a lost EID tag number



Link mothers to their offspring

- Automatically link mothers with their newborns
- Add birthing details and data such as sex, birthing ease and fate.



Versatile data entry

Animal notes can be set to appear as an alert when the animal is next scanned.



Records weights and displays gain

Receive weights from your weigh scale via Bluetooth to record against the animal's ID. View weight and weigh gain data for an individual animal.

Hand Free, fixed EID Reader

Hands Free EID tag readers comprise an antenna panel and an electronic controller. The readers are fixed in place, usually on a weighing crate or at a location in a race, for hands free, automated reading of EID tags.

Connects to TWR Weigh Scales



TWR-5 and TWR-1 include a built in EID reader. Farmers can plug the weigh scale straight in to an EID antenna panel to record weights and easily scan EID tags. This eliminates the need to purchase a separate EID controller.

Long-life, water proof construction



Permanently mounted to a crush or race, suitable for use in all weather conditions and designed for harsh farming environments.

EID Readers and Antennas

Gallagher Hands Free EID Tag Readers are ideal for fixed, hands-free EID data collection on any livestock, usually in a weighing crate or at a location in a race. An EID tag reader enables farmers to reap the maximum value from their EID tags, beyond simple compliance. With up to 1.2m read range, these permanent hands-free EID reading solutions are easy to use and a reliable way to collect EID data as an animal walks past or weighed in a crush or race.

EID Tag Reader Antenna Panel (G03124) pictured with the TWR-5 Weigh Scale (G02606)



Benefits

Multiple sizes for all livestock or animal yard configurations

EID Panels are available in multiple sizes, with additional extension cable available to suit all animal types and different weighing and EID set ups:

- 1300mm Antenna Panel G03112
- 600mm Antenna Panel G03121
- 600mm EID Tag Reader Antenna (6m cable) G03124 (Pictured)
- Antenna Extension cable 4m G05600/6m G05603

Long-life, waterproof panel

For outdoor use in all weather. Available in 1300mm and 600mm sizes

Easy installation with all hardware included

Simply mount panel using reinforced mounting hardware within your yards and plug in t your TWR Weigh Scale

No calibration required

Antenna automatically tunes to the Tag Reader Controller, no fiddling or calibration required

Don't have a TWR Weigh Scale?

Add a battery powered, bluetooth enabled EID Tag Reader Controller BR (G03111) to an Antenna panel to read and store up to 20,000 EID tags or pair with a non TWR EID compatible weigh scale.



BR EID Tag Reader Controller with 600mm Antenna Panel pictured.

A better view of your animals.



Animal Performance web and mobile app completes your Gallagher Weighing and EID devices.

Take control of animal production with an all-in-one hardware and software solution that allows you to track livestock performance, make better decisions and grow your profit.

Meaningful insights and simple data analysis to make more informed decisions.

Features

View your animal data from anywhere at any time, on multiple devices

Sync your animal data without leaving the yards

Built-in NAIT compliance





ANIMAL PERFORMANCE Every Day

Every Day gives you a fully connected Weighing and EID experience, enabling easy animal data collection. Access your animal data on any device, wherever and whenever you need it.

Free



Benefits

Information at your fingertips

Access and analyse your session or individual animal data on your P.C and mobile from anywhere

Sync animal data between multiple hardware devices

Synchronised animal data ensures the latest up-to-date data is accessible on your devices (Not available on Tsi2)

Stay compliant with your national traceability scheme (NZ and AU only)

Built-in NAIT integration provides easy compliance via the Animal Performance mobile app

Identify poor performers, treat them or cull early

Monitor animal performance and take action before they become an issue

Safe and secure - always backed-up online

Secure, online backup ensures you always working with the latest version of data

Always works with the latest software

Ensure your hardware is always running the latest software with software update notifications

Seamless product registration

New product registration process makes registration easy

Export session records to share with external partners

Export and share CSV files straight from the Animal Performance web and mobile app

Your one source of truth

View and edit your data from anywhere, at any time, on multiple devices.

Synchronised data ensures the latest up-to date data is accessible on your all your connected devices.





ANIMAL PERFORMANCE Plus

Ideal for tracking towards target weights, Animal Performance Plus is packed with features that help you measure and track how your animals are performing so you can make better decisions about your animals faster.

\$30 /month



2 MONTHS FREE TRIAL

All the benefits of Every Day, Plus:

Identify performance issues before they become a problem

Keep an eye on multiple aspects of an animal's performance, enabling you to identify and remedy them early

Set targets and monitor your progress

Manage and monitor individual animal and mob growth toward target weights, forecasting progress based on weight gains to help make the most efficient selling or breeding decisions

Track mob performance with analytics

Manage your individual mobs, set group targets and compare performance data between different groups of animals

Extract the data you need with filter export

Create and export filtered views of your animals to analyse and share your animal performance

Categorise your animals any way you want with group management

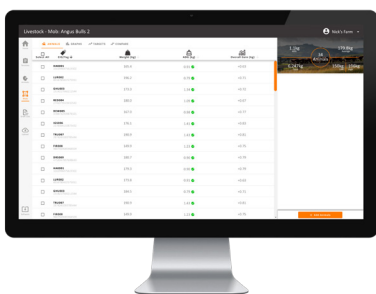
Place your animals in groups based on any criteria you require. Create draft lists and sync them straight to your Weigh Scale or Hand Held EID Reader

Use powerful custom filters for in depth performance insights and animal management

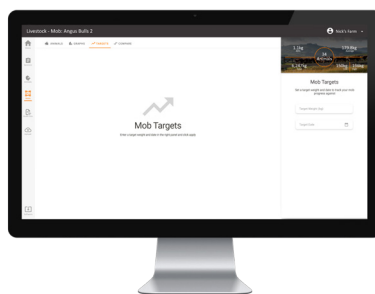
View and analyse your data any way you like, to focus on what is important, such as breed, weight, weight gain, traits, sex, custom calculations and many more...

Unlock your 'Weigh Scale in your pocket' for Wireless Loadbars:

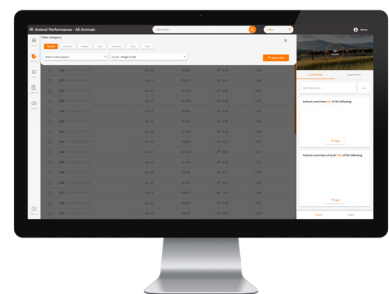
See page 16 for more information



Track mobs



Set targets



Custom filters

Strong, safe and instant power for an effective, durable and inexpensive option to keep livestock moving.

Stock Prod Rechargeable
SG250



- Balanced and comfortable hand grip
- Built in rechargeable battery
- Safety wrist strap with button locking clip.

Stock Prod Standard
SG150



- Disposable batteries included
- Safety wrist strap.

Car Charger for rechargeable model

SG003



Stock Prod Standard and Rechargeable Shafts

55 cm
(SG055)

82 cm
(SG082)

107 cm
(SG107)



Your local reseller is the first point of contact for all of your Gallagher product needs – with over 200 resellers throughout New Zealand there is sure to be a store near you.

If you need help with large scale electric fencing, watering or weighing and EID installations or expert advice on set up – talk to one of Gallagher’s Territory Managers.



Mike Ward
Northland
021 359 970
michael.ward@gallagher.com



Darren Smith
North Waikato / Hauraki / Coromandel
021 928 053
darren.smith@gallagher.com



Jeremy Sargent
South Waikato / King Country /
Central Plateau
027 261 0985
jeremy.sargent@gallagher.com



Tom Fitzgerald
BOP / East Coast
021 523 367
tom.fitzgerald@gallagher.com



Martin Weir
Taranaki / Whanganui / Horowhenua
021 272 3153
martin.weir@gallagher.com



Georgia Burgess
Manawatu / Wairarapa / Hawkes Bay
021 928 120
georgia.burgess@gallagher.com



Ken McMiken
Tasman / West Coast
021 243 7713
ken.mcmiken@gallagher.com

South Canterbury / Otago
021 226 1880
cs@am.gallagher.com



Jamie Waghorn
Canterbury
021 928 314
jamie.waghorn@gallagher.com

Questions?

We're here to help. You can also phone our Hamilton-based Customer Service Team at 0800 731 500.

Southland
021 833 246
cs@am.gallagher.com



Technical Support

We provide technical help and support for Gallagher Weighing and EID hardware and software products. Please call 0800 731 500 to speak to our office based Technical Support Team.

Customer Service Centre

If you have other queries, our Hamilton based Customer Service team can help:

Gallagher Helpline: 0800 731 500

Email: cs@am.gallagher.com

Web: am.gallagher.com

Gallagher Head Office,
Private Bag 3026 Hamilton.

GALLAGHER

181 Kahikatea Drive, Hamilton 3206, New Zealand.
Private Bag 3026, Hamilton 3240, New Zealand.

TEL 0800 731 500
FAX 07 838 9801

EMAIL cs@am.gallagher.com
www.gallagher.com